



# ATIM

AFRICA CENTER FOR TOBACCO  
INDUSTRY MONITORING AND POLICY RESEARCH

## NON-SMOKERS' EXPOSURE TO SECONDHAND SMOKE IN SOUTH AFRICA

Findings from a nationally representative sample of South African adults aged 16+ years from the South African Social Attitude Survey.

### WHAT IS SECONDHAND SMOKE?

**Secondhand smoke**

=



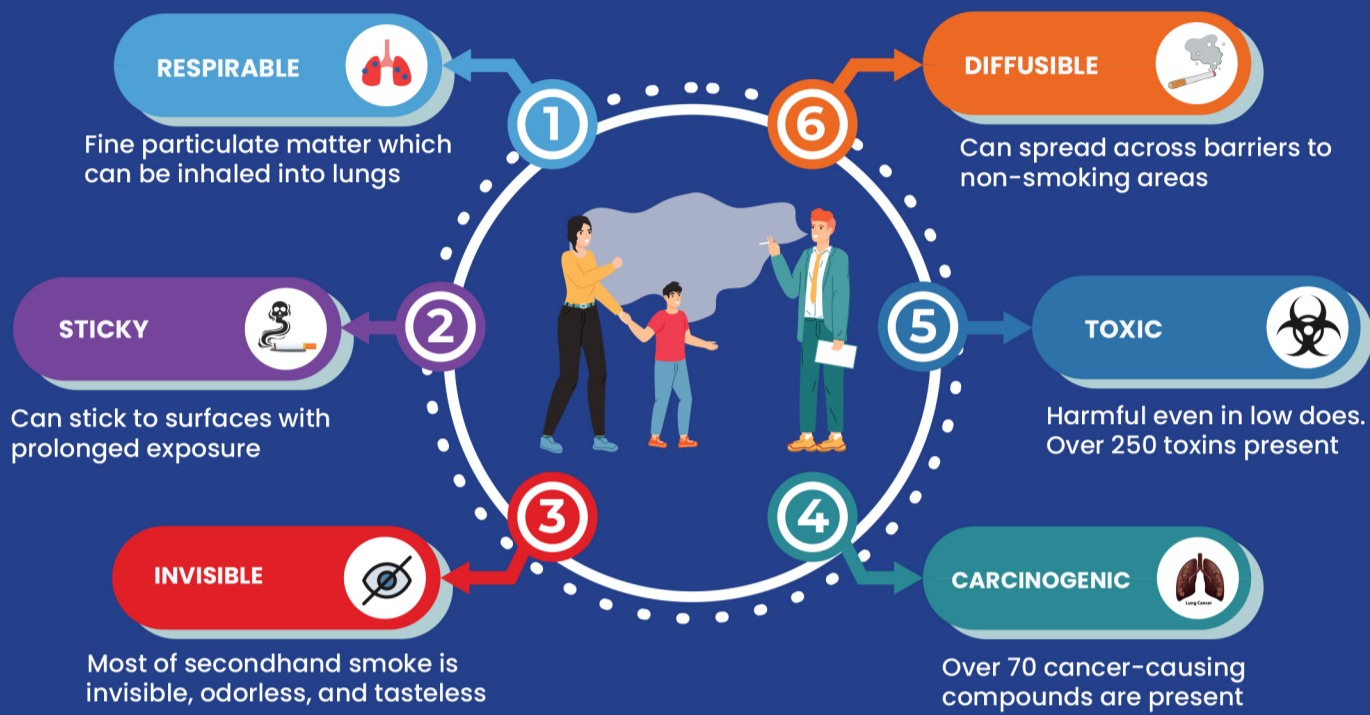
Smoke from the end of a burning tobacco product such as cigarettes, cigars, pipes or hookahs (sidestream smoke)

+



The tobacco smoke coming from the smoker's mouth (mainstream smoke)

### WHY IS SECONDHAND SMOKE SO DANGEROUS?



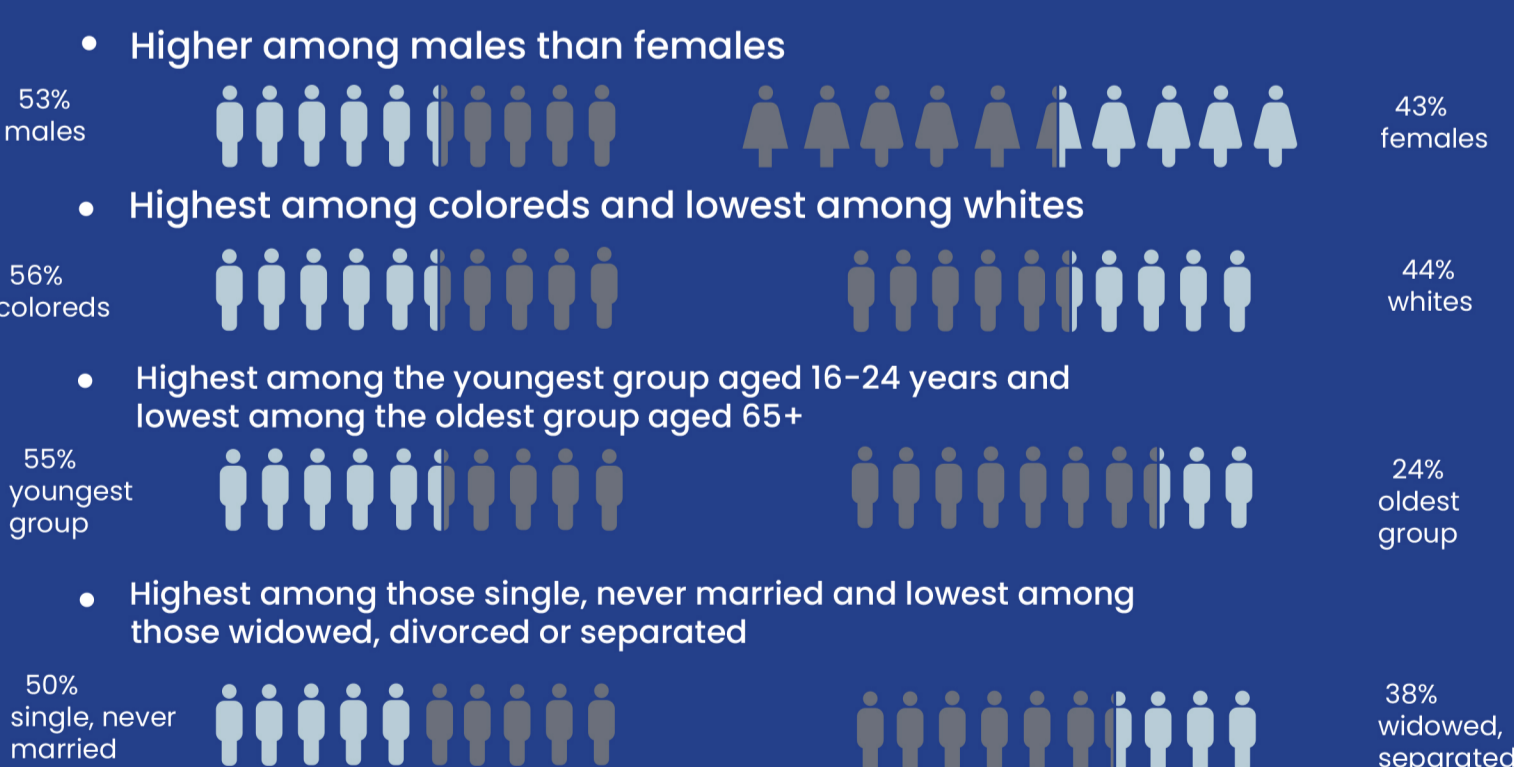
### WHERE ARE NON-SMOKERS IN SOUTH AFRICA BEING EXPOSED TO SECONDHAND SMOKE?



### LOCATION, LOCATION, LOCATION: WHO IS BEING EXPOSED THE MOST AT SPECIFIC LOCATIONS?



### DISPARITIES IN AGGREGATE EXPOSURE TO SECONDHAND SMOKE



### WHAT IS THE WAY FORWARD?

- Enact** stronger smoke-free laws.
- Enforce** existing smoke-free laws.
- Expand** smoke-free laws to include e-cigarettes.
- Educate** the public on the dangers of secondhand smoke.
- Eliminate** smoking sections and remove ashtrays.
- Erect** no smoking signs in public places.



**SOURCE:** Ngobese Sp, Egbe Co, Londani M, Ayo-yusuf Oa. Non-smoker's Exposure To Second-hand Smoke In South Africa During 2017. Int J Environ Res Public Health. 2020 Nov 3;17(21):8112. Doi: 10.3390/ijerph17218112.

**ACKNOWLEDGEMENT:** This work was supported by the African Capacity Building Foundation.